



## 53 Fanshawe Road, Bristol, BS14 9RY

**£500,000**

This immaculate four-bedroom semi-detached house is offered **\*\*for sale\*\*** in a popular residential area of Bristol, ideal for families seeking generous and flexible living space.

The ground floor features a separate reception room and an impressive open-plan kitchen/dining/family room with a kitchen island and excellent natural light. Bifold doors open onto a low-maintenance rear garden, creating a strong indoor-outdoor connection. A utility room and ground floor WC add everyday convenience.

Upstairs, the beautiful master suite includes a walk-in wardrobe and a stylish en-suite with freestanding bath and separate shower. There are three further bedrooms, two of which are doubles, together with a good-sized family bathroom featuring a rain shower. Plus a handy loft room with a drop down ladder, boarded and velux style windows plus a storage room.

Outside, the property benefits from an ample driveway providing off-street parking for several vehicles. The rear garden is designed for low maintenance and includes an outbuilding arranged as a gym/office space

### Entrance Hall



### Sitting Room

12'7" x 11'6" (3.86 x 3.53)



### Dining / Family Room

18'6" x 9'1" (5.64 x 2.79)



### Utility Room

10'9" max x 6'9" (3.3 max x 2.07)



### Open Plan Kitchen / Diner / Family Room

#### Kitchen / Breakfast

17'0" x 16'10" (5.20 x 5.14)



### Ground Floor WC

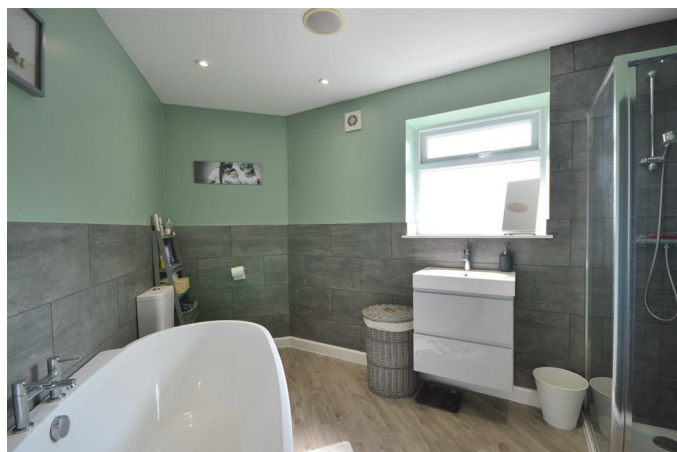


### First Floor Landing



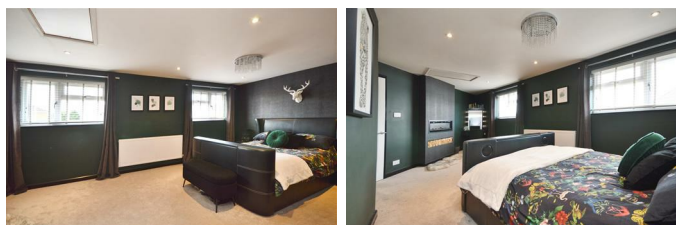
### En-Suite

9'8" max x 6'2" max (2.95 max x 1.90 max)



### Master Suite

22'8" x 11'7" (6.93 x 3.54)



### Bedroom Two

12'9" x 12'1" (3.90 x 3.70)

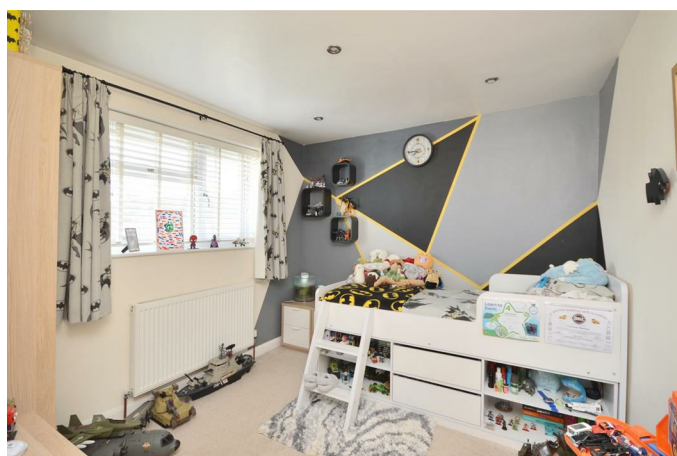


### Dressing Room



### Bedroom Three

11'10" x 9'5" (3.63 x 2.88)



### Bedroom Four

9'2" x 8'5" (2.80 x 2.57)



### Outside



### Home Office / Gym & Shower Room

#### Office Area

11'7" x 9'7" (3.55 x 2.93)



### Family Bathroom

10'4" x 5'5" (3.16 x 1.67)



### Loft Room

13'2" x 10'7" (4.02 x 3.25)



#### Gym Area

19'4" x 9'7" (5.91 x 2.93)



### Store Room

10'7" x 4'11" (3.25 x 1.52)

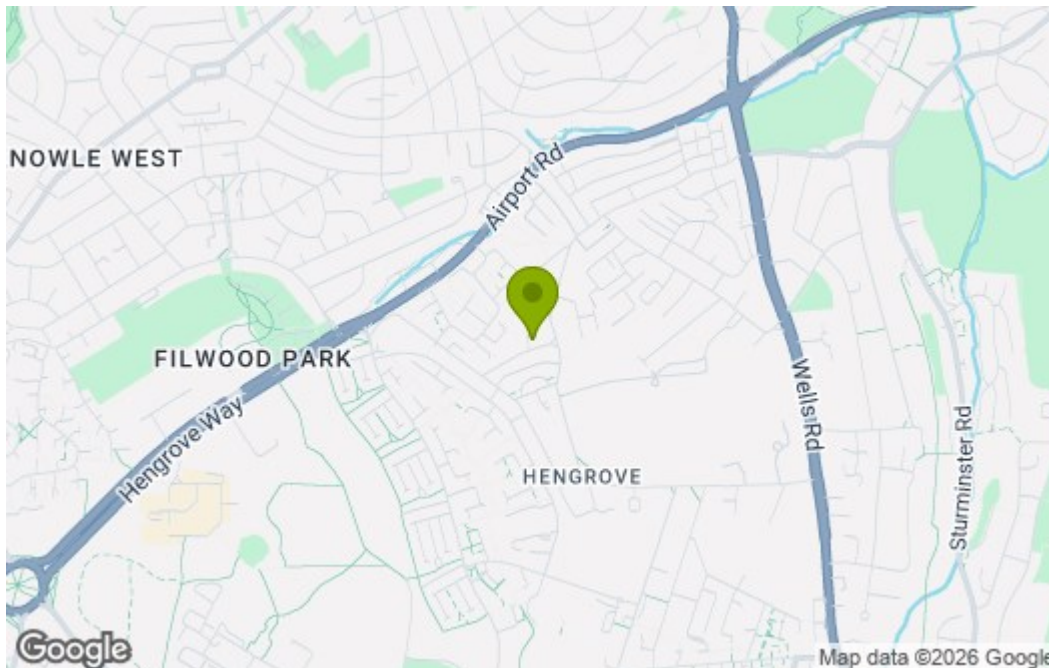
#### Shower Room & WC



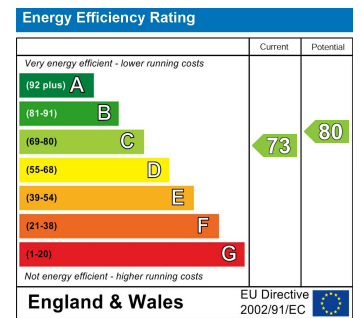
## Floor Plan



## Area Map



## Energy Efficiency Graph



These particulars, whilst believed to be accurate are set out as a general outline only for guidance and do not constitute any part of an offer or contract. Intending purchasers should not rely on them as statements of representation of fact, but must satisfy themselves by inspection or otherwise as to their accuracy. No person in this firm's employment has the authority to make or give any representation or warranty in respect of the property.